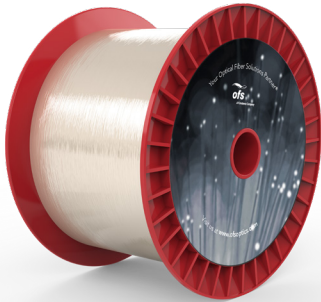


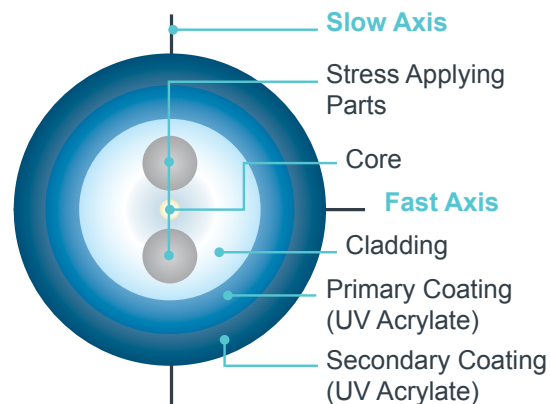
ClearLite® TruePhase® 1550 400 Polarization-Maintaining Optical Fiber

P/N: BF06734-06



Overview

TruePhase 1550 fibers designed to operate at 1550 nm, maintain linear polarization, and are available in standard and reduced buffer sizes. These fibers are made specifically for use with premium photonic devices such as phase-sensitive Lithium Niobate Modulators. Used as a source laser pigtail, TruePhase 1550 fibers preserve the coherence of emitted laser light.



Typical Applications

- Laser Pigtails
- Lithium Niobate and Other External Modulators
- Other Polarization-Sensitive Components
- PMD Compensators
- Polarizing Beam Splitters

Product Specifications	
Product Description	TruePhase 1550 400 PM Optical Fiber
Physical Characteristics	
Coating Type	Dual UV Acrylate
Cladding Diameter	125 ± 1.0 µm
Coating/Buffer Diameter	400 ± 15 µm
Core/Clad Offset	≤ 0.5 µm
Clad Non-Circularity	≤ 2.0%
Optical Characteristics	
Type	Polarization-Maintaining
Operating Wavelength	1550 nm
Cutoff Wavelength	≤ 1470 nm
Mode Field Diameter @ 1550 nm	10.5 ± 0.5 µm
Attenuation @ 1550 nm	≤ 0.5 dB/km
Beat Length @ 1550 nm	≤ 5.0 mm
Crosstalk @ 1550 nm/100 m	≤ -30 dB
Crosstalk (Typical) @ 1550 nm/100 m	≤ -35 dB
Crosstalk under bend, @ 1550 nm, 10 turns, 7.5 mm radius	≤ -30 dB
Macrobending Loss @ 1550 nm, 10 turns, 7.5 mm radius	≤ -0.2 dB
Numerical Aperture (Nominal)	0.13
Mechanical and Environmental	
Operating Temperature	-40 to +85 °C
Short-Term Bend Radius	≥ 5 mm
Long-Term Bend Radius	≥ 9 mm
Proof Test Level	≥ 200 kpsi (1.38 GPa)
Order by Part Number	BF06734-06
OPTIONS: Cabling, Coating Material and Dimensions, Metalization, Optical Properties, Proof Test	

For additional information please contact your sales representative.

You can also visit our website at www.ofsoptics.com or call 1-888-fiberhelp (1-888-342-3743) USA or 1-770-798-5555 outside the USA.