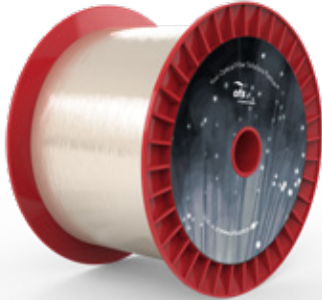


ClearLite® 1550 17 Optical Fiber

P/N: BF06158



Overview

Our full line of optical fibers operating at 1550 nm includes a variety of coating options, NAs, and mode field diameters to optimize performance in different applications. The longer cutoff of these fibers, as compared to standard transmission fiber, offers improved optical bend performance.

Typical Applications

Fiber Optic Strain, Pressure,
and Acoustic Sensors

Fiber Payout

Medical Sensing and Imaging

WDM Devices

Product Specifications	
Product Description	ClearLite 1550 17 Optical Fiber
Physical Characteristics	
Coating Material	Dual UV Acrylate
Core Diameter (Nominal)	6.5 μm
Cladding Diameter	125 \pm 2 μm
Coating/Buffer Diameter	245 \pm 15 μm
Clad Non-Circularity	\leq 2.0%
Core/Clad Offset	\leq 0.75 μm
Optical Characteristics	
Type	Single-Mode
Operating Wavelength	1550 nm
Cutoff Wavelength	\leq 1500 nm
Mode Field Diameter @ 1550 nm	7.5 \pm 0.75 μm
Attenuation @ 1550 nm	\leq 0.6 dB/km
Numerical Aperture (Nominal)	0.17
Mechanical and Environmental	
Operating Temperature	-40 to +85 $^{\circ}\text{C}$
Short-Term Bend Radius	\geq 10 mm
Long-Term Bend Radius	\geq 17 mm
Proof Test Level	\geq 100 kpsi (0.689 GPa)
Order by Part Number	BF06158
Product Description Code	SMB-E1550B
OPTIONS: Buffer Color, Buffer Material, Buffer Size, Cutoff Wavelength, Metalization, Proof Test, Termination	

For additional information please contact your sales representative.

You can also visit our website at www.ofsoptics.com or call 1-888-fiberhelp (1-888-342-3743) USA or 1-770-798-5555 outside the USA.



Copyright © 2019 OFS Fitel, LLC.
All rights reserved, printed in USA.

OFS Marketing Communications
Date: 1119

ClearLite is a registered trademark of OFS Fitel, LLC. OFS reserves the right to make changes to the prices and product(s) described in this document at any time without notice. This document is for informational purposes only and is not intended to modify or supplement any OFS warranties or specifications relating to any of its products or services.